



The Power and Data **CUBM4** is a solution that complements tables, podiums or any worksurface with an easy access to power and internet connection.

It features a compact low-profile design with Bezel flush mount with 4 Modules, 2x Temper Resistant AC outlets, 1x CAT 6 and 1x HDMI.

Standard Features

- 2x Temper Resistant 125V 15A AC Outlets.
- 1x Cat 6 port (w/pigtail).
- 1x HDMI).
- Side-exiting, 6 ft. power cord Supplied with Low Profile Flat 45° Angle 120 VAC Plug.
- Black (ABS).

Options

- **CUTTING-CHARGE** Factory cut, panel mount cut-out, added to our podiums, lecterns and tables.
(Specify desired cut-out location when ordering)

Specifications

Model: CUBM4

Cutout: 1.43" x 5.15" (Top rout),
1.65" x 6.89" (Bottom rout)

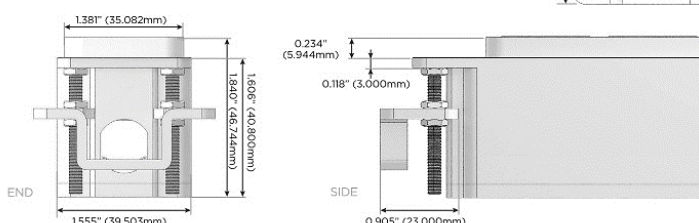
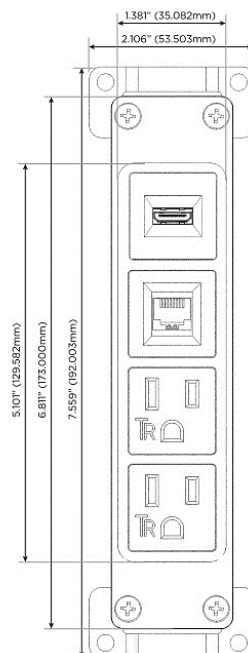
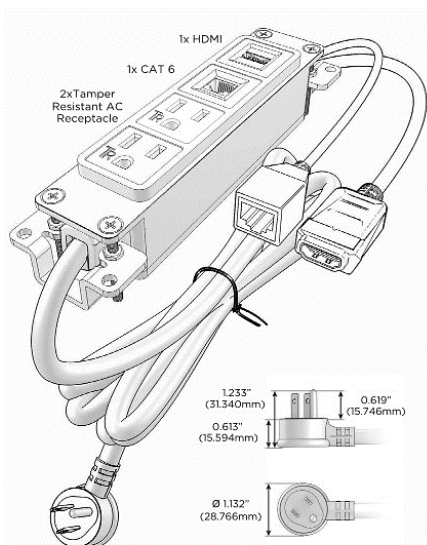
NOTE: Precision Top & Bottom cuts/routes required.

**Highly recommended to order panels pre-cut from AVFI for proper fitting.*

Cord length: 6 ft.

Color: Black (ABS)

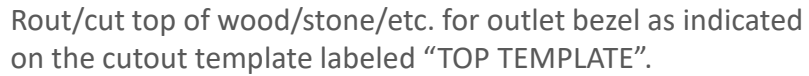
(UL Listed for mounting in Furniture).



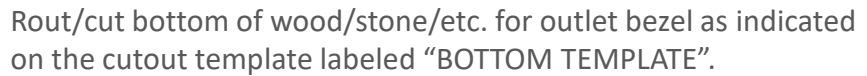
See next page for Installation Guide.

The information contained in this drawing is the sole property of Audio Visual Furniture International. Any reproduction in part or as a whole without the written permission of Audio Visual Furniture International is prohibited. We can build or modify stock configurations to suit customer specifications. Please contact us to discuss how this service can help meet your needs. Some quantity restrictions may apply. Specification subject to change without notice. Computers, cameras, monitors, etc. are shown to illustrate product usage and are not included unless otherwise noted.

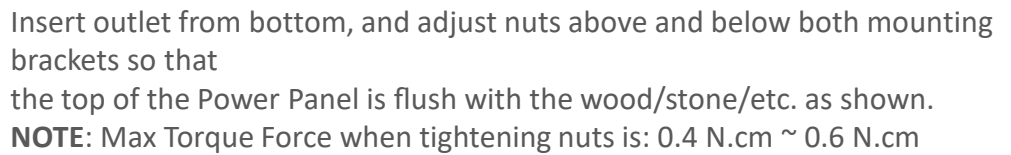
1 Hole on Top



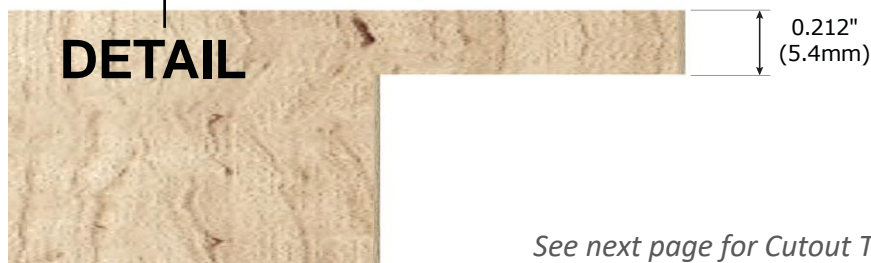
2 Hole on Bottom



3 Install Panel

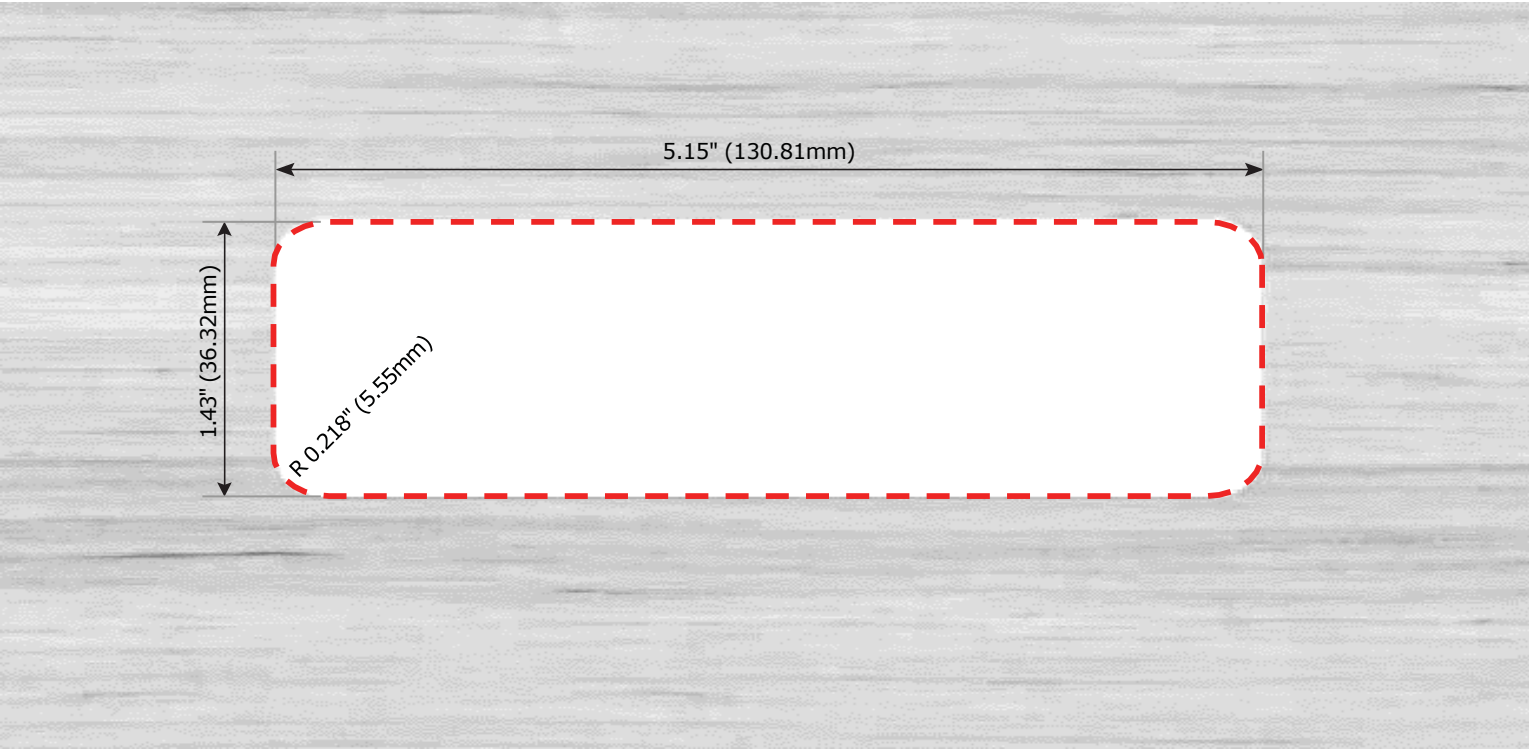


4 Secure Screws



See next page for Cutout Template.

TOP TEMPLATE



BOTTOM TEMPLATE

